

**DIPUTADO FEDERAL  
ELIO BOCANEGRA  
RUIZ**

**INFORME DE VIAJE DE  
TRABAJO**

**THE CHANGING ENERGY  
LANDSCAPE:**

**PRACTICAL SKILLS AND  
PERSPECTIVES**

**CHICAGO, IL**

**JUNIO 22 – 24  
2016**

## **Los cambios del paisaje de energía: Habilidades Prácticas y Perspectivas**

Este seminario de educación ejecutiva de tres días proporciona un marco global para la comprensión y la navegación por los cambios sin precedentes que se producen en los mercados actuales de la energía. Sesiones interdisciplinarias prácticas enlazarán la economía del comportamiento, evaluación de la política, la ciencia de datos, ciencias naturales y físicas, y las perspectivas de negocio para equipar a los líderes de la industria emergente con ideas de gran alcance para la toma de decisiones estratégicas más eficaz. Todas las sesiones de aprendizaje están dirigidas por profesores de la Universidad de Chicago.

## **Temas clave y sesiones de aprendizaje**

Aplicando la teoría microeconómica de precios de productos básicos para la comprensión y la predicción de la dinámica del mercado

La evaluación de la eficacia de la política pública

La ciencia del cambio climático Desmitificar: La comprensión de la Previsión

Las políticas públicas para enfrentar el cambio climático

Los mercados de electricidad y el ejemplo de las experiencias previas de Desregulación

Cadena de Suministro general Sesiones para los no expertos, incluyendo: Exploración y Producción, Refino y Comercialización de Combustibles, Gas Natural Transporte y distribución, generación de energía y mercados de capacidad y desarrollo de energía renovable

# **Técnicas Prácticas y Perspectivas para el Sector Energético políticas públicas analíticas**

## **Perfil del programa**

### **Aplicando la teoría microeconómica de precios de productos básicos de Predicción**

- La fijación de precios en los mercados competitivos frente concentrado
- A corto plazo frente a los costos marginales de largo plazo
- Reglamento para incentivar precios competitivos y alentar el suministro sostenible de materias primas
- De casos y estudios prácticos

## **La evaluación de la eficacia de la política pública**

- Ajuste de los datos de referencia
- Los modelos estadísticos y económicos para medir el impacto
- Errores comunes
- Caso de estudio

## **La ciencia del cambio climático**

### **Desmitificar: La comprensión de la Previsión**

- Modelo climático
- Lo que hace que un gas de efecto invernadero
- El ciclo del carbono hoy
- La comprensión de la previsión global y los compromisos de México en París 2015

## **Las políticas públicas para enfrentar el cambio climático**

- Cartera de opciones
- Casos fallidos
- Casos de éxito
- Viaje por México para cumplir con sus compromisos de París 2015

## **Lecciones de las experiencias previas de Desregulación**

- La transición a un sistema basado en el mercado en la generación y la capacidad
- Impactos en el gas natural, fuel oil, y los precios de destilados
- Equilibrio entre incentivar la capacidad a largo plazo y los mercados con bajo punto
- Las lecciones aprendidas de experiencias en los EE.UU.

## **Resumen cadena de suministro para los no expertos**

- Exploración y producción de gas y carbón
- Refinación de petróleo crudo y de los combustibles comercialización
- Transporte de gas natural y distribución de gas natural licuado
- Mercados de generación de energía y de capacidad
- Generación de energía renovable (eólica y solar)

## **Mesa redonda**

- Lo que queda por delante en el viaje de Energía de México



**CHICAGO HARRIS**  
PUBLIC POLICY | THE UNIVERSITY OF CHICAGO

# **Policy Area Guidebook**

A RESOURCE FOR STUDENTS AND EMPLOYERS



---

This booklet provides information about the most common areas of study at the University of Chicago Harris School of Public Policy and is not intended to be exhaustive. Chicago Harris is an international leader in evidence-based, data-rich analysis of complex public policy challenges. We give our alumni the tools they need to tackle multi-dimensional policy issues throughout the public, not-for-profit, and private sectors.

#### **CONTENTS**

- 1 Child and Family Policy
  - 2 Cultural Policy
  - 3 Economic Policy and Public Finance
  - 4 Education Policy
  - 5 Energy, Environmental, and Science Policy
  - 6 Global Security
  - 7 Health Policy
  - 8 International Policy
  - 9 Politics and the Policymaking Process
  - 10 Program Evaluation and Methods of Policy Analysis
  - 11 Social Policy and Inequality
  - 12 Urban Policy
-

# Child and Family Policy



## Organizations That Hire Chicago Harris

Recruiters from organizations in child and family policy continuously find smart, committed candidates for coveted internships and full-time positions. Recent employer partners include:

- The Bridgespan Group
- Brookings Institute
- Chapin Hall at the University of Chicago
- The Chicago Community Trust
- Chicago Public Schools
- Children's Aid and Family Services
- Children's Home + Aid
- Congressional Budget Office
- Cornell University
- Department of Family and Supportive Services, City of Chicago
- Duke University
- Erikson Institute
- First Five Years Fund
- Illinois Action for Children
- Illinois Department of Human Services
- Institute for Children, Poverty, and Homelessness
- The Irving Harris Foundation
- The John D. and Catherine T. MacArthur Foundation
- Mathematica Policy Research
- MDRC
- Metropolis Strategies
- National Opinion Research Center
- Ounce of Prevention Fund
- Prevent Child Abuse America (PCA America)
- Planned Parenthood of Illinois
- Stand for Children
- Syracuse University
- U.S. Centers for Disease Control and Prevention (CDC)
- U.S. Department of Health and Human Services
- University of Chicago
- University of Illinois at Chicago
- University of Michigan
- University of North Carolina
- University of Toronto
- University of Virginia
- Urban Education Institute
- Urban Institute
- Voices for Illinois Children
- The World Bank

## Student Organizations

Student life at Chicago Harris includes a wide variety of extracurricular activities—from academic workshops and discussions to community development and group outings. Chicago Harris and UChicago student organizations that specifically focus on child and family policy issues include:

- Chicago Initiative for Economic Development in Early Childhood
- Community and Economic Development Organization
- Harris Food Policy Advocacy Group
- Innovators in Social Policy
- Women in Public Policy

## Typical Coursework

### Child and Family Policy

Policy Interventions to Improve Children's Health and Human Capital; Developmental Perspectives on Child and Family Policy; The Science and Policy of Early Childhood; Poverty and Social Welfare Policy; Work and Family: Policies to Promote Family Well-Being and Child Development; Transitions to Adulthood; Mixed Methods Approaches to Policy Research; School Readiness: Child Development and Public Policy; The National Longitudinal Survey of Youth (NLSY): A Social Policy and Demographic Research Tool; Economics of Child & Family Policy; Poverty, Inequality and Investments in Education; Topics in Family and Child Policy; Policy and Research Frameworks; Welfare Policy; Economics of Education Policy; Higher Education and Public Policy; Early Childhood Development and Public Policy

### Chicago Harris MPP Core Courses

Analytical Politics I: Strategic Foundations; Analytical Politics II: The Policymaking Process (Domestic and International options); Principles of Microeconomics and Public Policy I and II; Statistical Methods for Public Policy I and II; Decisions and Organizations; Mathematical Statistics and Public Policy I and II (alternate core courses)

### Example Mini-Course (not for credit)

Youth Gang Problem

## Child and Family Policy Faculty and Affiliated Researchers<sup>1</sup>

### Faculty

Dan A. Black, Kerwin Charles, Amy Claessens, Jeffrey Grogger, James Heckman, Ariel Kalil, Robert J. LaLonde, Jens Ludwig, Ofer Malamud, Iona Marinescu, Susan E. Meyer, Alicia Menendez, Bruce Meyer, Robert Michael, Steven Raudenbush  
For faculty biographies, visit [harris.uchicago.edu/faculty](http://harris.uchicago.edu/faculty)

### Affiliated Researchers

Evelyn Brodtkin, Rena Conti, Rupa Datta, Shelley Davis, Candice Kane, Harold Pollack, Matthew Stagner

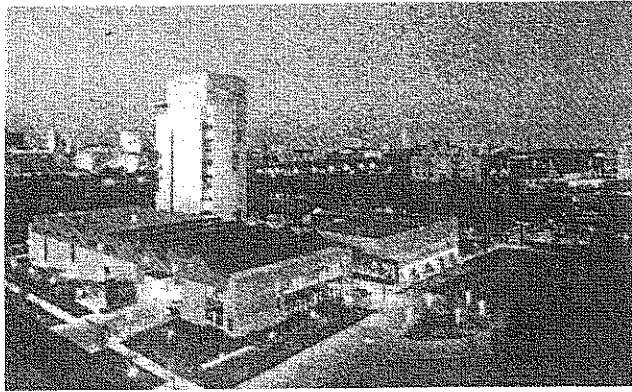
## University Centers and Programs

Faculty and student research at Chicago Harris is guided not only by theoretical interests, but also by a strong commitment to solving enduring public policy problems and applying skills learned in the classroom. Chicago Harris students and faculty collaborate with affiliated centers and programs across campus that specifically focus on child and family policy, including:

- Center for Early Childhood Research
- Center for Human Potential and Public Policy
- Chapin Hall
- NORC
- Pritzker Consortium on Early Childhood Development
- Urban Education Institute

<sup>1</sup> Faculty lists are offered each quarter to each unit. There are a wide variety of affiliated centers, programs, and faculty who are not listed here. For more information, visit [harris.uchicago.edu](http://harris.uchicago.edu).

# Cultural Policy



## Organizations That Hire Chicago Harris

Recruiters from organizations in cultural policy continuously find smart, committed candidates for coveted internships and full-time positions. Recent employer partners include:

- American Jewish Committee
- Art Institute of Chicago
- Chicago Community Trust
- The Commonwealth Fund
- Council on Foreign Relations
- Cultural Vistas
- Department of Cultural Affairs and Special Events, City of Chicago
- English Heritage
- Fractured Atlas
- NORC at the University of Chicago
- Womensphere

## Student Organizations

Student life at Chicago Harris includes a wide variety of extracurricular activities—from academic workshops and discussions to community development and group outings. Chicago Harris and UChicago student organizations that focus on cultural policy issues include:

- Latin America(n) Matters
- Minorities in Public Policy Studies
- Minority Graduate Student Association
- Organization of Black Students
- Out in Public Policy
- Persian Cultural Society
- Asian Policy Forum

## Typical Coursework\*

### Cultural Policy

Introduction to Cultural Policy; Cultural Economics; Hot Button Topics in Cultural Policy

### Chicago Harris MPP Core Courses

Analytical Politics I; Strategic Foundations; Analytical Politics II; The Policymaking Process (Domestic and International options); Principles of Microeconomics and Public Policy I and II; Statistical Methods for Public Policy I and II; Decisions and Organizations; Mathematical Statistics and Public Policy I and II (alternate core courses)

## University Centers and Programs

Faculty and student research at Chicago Harris is guided not only by theoretical interests, but also by a strong commitment to solving enduring public policy problems and applying skills learned in the classroom. Chicago Harris students and faculty collaborate with affiliated centers and programs across campus that focus specifically on cultural policy, including:

- Center for the Study of Race, Politics, and Culture
- Cultural Policy Center
- Karla Scherer Center for the Study of American Culture

## Cultural Policy Faculty and Affiliated Researchers\*\*

### Faculty

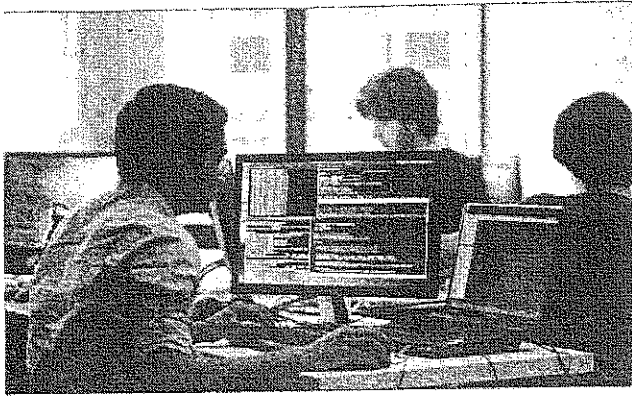
Anjali Adukia, James Heckman, Susan Mayer, Bruce Meyer, Jens Ludwig, Robert J. LaLonde

For faculty biographies, visit [harris.uchicago.edu/faculty](http://harris.uchicago.edu/faculty)

### Affiliated Researchers

Betty G. Farrelli, D. Carroll Joynes

# Economic Policy and Public Finance



## Organizations That Hire Chicago Harris

Recruiters from organizations in economic policy and public finance continuously find smart, committed candidates for coveted internships and full-time positions. Recent employer partners include:

- ACCION Chicago
- Anderson Economic Group
- Arab Jordan Investment Bank
- Bain & Company
- Bloomberg
- Booz Ailen Hamilton
- Center for Financial Services Innovation
- Center for Tax and Budget Accountability
- Chicagoland Chamber of Commerce
- City of Chicago, Office of the City Treasurer
- Congressional Budget Office
- Deloitte
- Federal Reserve Bank
- Federal Reserve Board
- HVS Consulting & Valuation
- Illinois Commerce Commission
- Illinois Finance Authority
- Office of the Illinois State Treasurer
- Inter-American Development Bank
- International Monetary Fund
- Joint Legislative Budget Committee
- J.P. Morgan Chase
- The Laubacher Company
- Maryland Department of Budget and Management
- McKinsey & Company
- Metropolis Strategies
- Millennium Challenge Corporation
- Moody's
- Navigant Consulting
- Neighborhood Housing Services of Chicago
- Office of Management and Budget
- The Pew Charitable Trusts
- The PFM Group
- Promontory Financial Group
- Securities Industry and Financial Markets Association
- Standard & Poor's
- UBS
- U.S. Department of the Treasury
- U.S. Office of Personnel Management
- West Monroe Partners
- The World Bank

## Student Organizations

Student life at Chicago Harris includes a wide variety of extracurricular activities—from academic workshops and discussions to community development and group outings. Chicago Harris and UChicago student organizations that specifically focus on economic policy and public finance issues include:

- Community and Economic Development Organization
- Committee on International Affairs and Public Policy
- Economic and Financial Modeling Club
- Graduate Consulting Club
- Law and Economics Society
- Political Economy Club
- University of Chicago Women in Business
- UChicago Microfinance Initiative

## Typical Coursework\*

### Economic Theory

Advanced Microeconomics; Competition Policy: Theory and Practice; Poverty and Economic Development; Intermediate Microeconomics; Macroeconomics for Public Policy; Matching, Efficiency, and Inequality; Political Economy of Cities and Metropolitan Areas; Principles of Microeconomics and Public Policy I and II

### Finance

Finance; Housing Policy and the Crisis; Macroeconomics for Public Policy; Public Finance and Public Policy; State and Local Public Finance; Topics in Finance

### Public Expenditures

Distributive Politics; Political Feasibility Analysis; Winning Strategies in Public Policy; Public Budgeting; Local & State Governments; Public Sector Pensions; Fundamentals of Municipal Bonds

### Taxes

Competition Policy: Theory and Practice; International Trade Theory and Policy; Taxation and Public Finance; Topics in U.S. Tax Policy

## Chicago Harris MPP Core Courses

Analytical Politics I: Strategic Foundations; Analytical Politics II: The Policymaking Process (Domestic and International options); Principles of Microeconomics and Public Policy I and II; Statistical Methods for Public Policy I and II; Decisions and Organizations; Mathematical Statistics and Public Policy I and II (alternate core courses)

**Students who complete the following four courses and meet all criteria will be eligible to receive a Certificate in Municipal Finance: State and Local Public Finance; Political Economy of Cities and Metropolitan Areas; Public Budgeting; and Fundamentals of Municipal Bonds.**

## Economic Policy and Public Finance Faculty and Affiliated Researchers<sup>1</sup>

### Faculty

Scott Ashworth, Christopher R. Berry, Dan A. Black, Ethan Bueno de Mesquita, Kerwin Charles, Don L. Coursey, Daniel Diermeier, Jeffrey Grogger, James J. Heckman, Damon Jones, Benjamin Keys, Robert J. LaLonde, Jens Ludwig, Ofer Malamud, Willard G. Manning, Ioana Marinescu, David O. Meltzer, Alicia Menendez, Bruce D. Meyer, B. Pablo Montagnes, Roger Myerson, Tomas J. Philipson, James Robinson, Raaj Sah, Paula Worthington

For faculty biographies, visit [harris.uchicago.edu/faculty](http://harris.uchicago.edu/faculty)

### Affiliated Researchers

Michael Belsky, Rena Conti, Sean Durkin, Ginger Ostro, Frank Schell, Sabina Shaikh, Daniel Sullivan, George S. Tolley

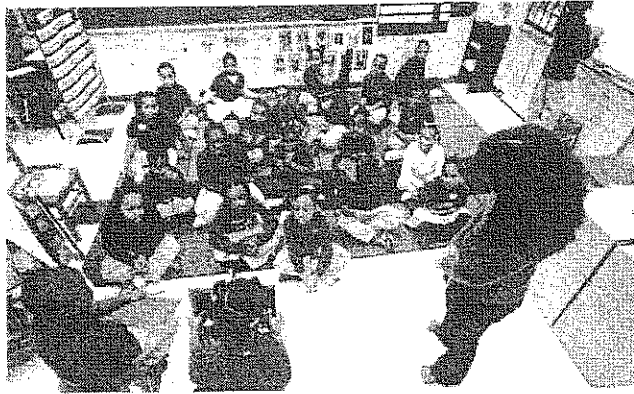
## University Centers and Programs

Faculty and student research at Chicago Harris is guided not only by theoretical interests, but also by a strong commitment to solving enduring public policy problems and applying skills learned in the classroom. Chicago Harris students and faculty collaborate with affiliated centers and programs across campus that focus specifically on economic policy and public finance issues, including:

- Becker Friedman Institute for Research in Economics
- Center for Policy Practice
- Center for Population Economics
- Center for Social Program Evaluation
- Center on the Demography and Economics of Aging
- Institute for Law and Economics
- The Paulson Institute
- Program on Political Institutions
- Program on International Politics, Economics, and Security
- Stigler Center for the Study of the Economy and the State
- Urban Policy Initiative

<sup>1</sup> This list is not exhaustive. For more information on our faculty and affiliated researchers, visit [harris.uchicago.edu/faculty](http://harris.uchicago.edu/faculty) and [harris.uchicago.edu/affiliated-researchers](http://harris.uchicago.edu/affiliated-researchers).

# Education Policy



## Organizations That Hire Chicago Harris

Recruiters from organizations in education policy continuously find smart, committed candidates for coveted internships and full-time positions. Recent employer partners include:

- Academy for Global Citizenship
- Advance Illinois
- American Association for the Advancement of Science (AAAS)
- American Institutes for Research (AIR)
- Baltimore City Public Schools
- Booz Allen Hamilton
- The Bridgespan Group
- Center for Education Policy Research, Harvard University
- Chicago Public Schools
- Chicago Teachers' Union
- Children's Home + Aid
- City Colleges of Chicago
- Congressional Budget Office
- Consortium on Chicago School Research
- Council for Adult & Experiential Learning
- Denver Public Schools
- Department of Education
- Education Trust
- Erikson Institute
- First Five Years Fund
- Fiscal Management Associates, LLC
- Georgetown Law
- Human Capital Research
- Huron Consulting Group Inc
- Illinois Network of Charter Schools
- Institute for the International Education of Students
- Institutes for Research
- Inter-American Development Bank
- John F. Kennedy School of Government, Harvard University
- Kaplan Test Prep
- Macalester College
- Namaste Charter School
- Northwestern University
- Oakland Unified School District
- Ounce of Prevention Fund
- Pennsylvania State University
- Planned Parenthood of Illinois (PPIL)
- Pratham USA
- Princeton University
- Reasoning Mind
- Robert Bosch Foundation Fellowship Program
- Teach For America
- The Education Trust
- The Enterprise Initiative, University of Chicago
- The New Teacher Project
- U.S. Government Accountability Office
- U.S. Office of Personnel Management
- University of Alabama
- University of California Office of the President
- University of Chicago Biological Sciences
- University of Denver-Institute for Public Policy Studies
- University of Maryland
- University of Toronto

## Student Organizations

Student life at Chicago Harris includes a wide variety of extracurricular activities—from academic workshops and discussions to community development and group outings. Chicago Harris and UChicago student organizations that specifically focus on education policy issues include:

- Education Policy Student Association
- Innovators in Social Policy

## Typical Coursework

### Education Policy

Economics of Education Policy; Education Leadership, Policy, and Philanthropy; Education Policy in an International Context, Higher Education and Public Policy; K-12 Education Policy; State and Local Public Finance: Education in Developing Contexts

### Chicago Harris MPP Core Courses

Analytical Politics I: Strategic Foundations; Analytical Politics II: The Policymaking Process (Domestic and International options); Principles of Microeconomics and Public Policy I and II; Statistical Methods for Public Policy I and II; Decisions and Organizations; Mathematical Statistics and Public Policy I and II (alternate core courses)

### Example Mini-Course (not for credit)

An Introduction to Science, Technology, Engineering; Mathematics Education Policy: School, District, and National Perspectives

## Education Policy Faculty and Affiliated Researchers Faculty

Anjali Adukia, Amy Claessens, James Heckman, Ariel Kaili, Robert LaLonde, Ofer Malamud, Alicia Menendez  
For faculty biographies, visit [harris.uchicago.edu/faculty](http://harris.uchicago.edu/faculty)

### Affiliated Researchers

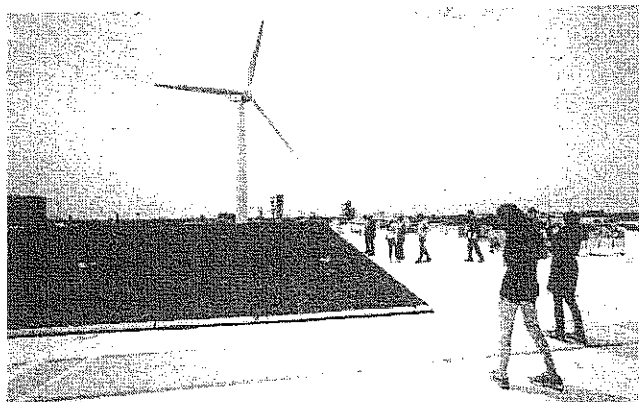
Michael Lach, Terry Mazany

## University Centers and Programs

Faculty and student research at Chicago Harris is guided not only by theoretical interests, but also by a strong commitment to solving enduring public policy problems and applying skills learned in the classroom. Chicago Harris students and faculty collaborate with affiliated centers and programs across campus that specifically focus on education policy, including:

- Center for Early Childhood Research
- Center for Human Potential and Public Policy
- Center for Teaching and Learning
- Chapin Hall Center for Children
- Joint Center for Education Research
- Pritzker Consortium on Early Childhood Development
- Urban Education Institute

# Energy, Environmental, and Science Policy



## Organizations That Hire Chicago Harris

Recruiters from organizations in energy, environmental, and science policy continuously find smart, committed candidates for coveted internships and full-time positions. Recent employer partners include:

- AllCell Technologies
- American Association for the Advancement of Science
- American Institutes for Research
- Bain & Company
- Booz Allen Hamilton
- Breakthrough Institute
- The Bridgespan Group
- Chicago Transit Authority
- Civic Consulting Alliance
- Great Lakes and St. Lawrence Cities Initiative
- ICLEI – Local Governments for Sustainability
- The Laubacher Company
- Midwest Energy Efficiency Alliance
- Millennium Challenge Corporation
- National Oceanic and Atmospheric Administration
- National Park Service
- Natural Resources Council of Maine
- Navigant Consulting
- Organisation for Economic Co-operation and Development (OECD)
- The Pew Charitable Trusts
- Power Switch NFP
- Securing America's Future Energy (SAFE)
- SustainUS
- University of Chicago Division of the Biological Sciences
- U.S. Department of Agriculture
- U.S. Department of Energy

## Student Organizations

Student life at Chicago Harris includes a wide variety of extracurricular activities—from academic workshops and discussions to community development and group outings. Chicago Harris and UChicago student organizations that specifically focus on energy, environmental, and science policy include:

- Chicago Environmental Policy Association
- Green Campus Initiative
- Harris Energy Association
- Women in Science

## Typical Coursework\*

### Environmental Policy

Environmental Economics; Environmental Science and Policy; Policy Approaches to Climate Change; Environment, Agriculture, and Food; Economic and Policy Analysis. Biomedical Technology: Innovation, Investment, and Management; Energy and Energy Policy; Physics and Technology for Future Policy Works; Nuclear Policy

### Science Policy

Biomedical Technology: Innovation, Investment, and Management; Energy and Energy Policy; Physics and Technology for Future Policy Works; Nuclear Policy

### Chicago Harris MPP Core Courses

Analytical Politics I: Strategic Foundations; Analytical Politics II: The Policymaking Process (Domestic and International options); Principles of Microeconomics and Public Policy I and II; Statistical Methods for Public Policy I and II; Decisions and Organizations; Mathematical Statistics and Public Policy I and II (alternate core courses)

### Example Mini-Course (not for credit)

Science, Technology, and Policy

## Energy, Environmental, and Science Policy Faculty and Affiliated Researchers\*\*

### Faculty

Don L. Coursey, Michael Greenstone, Koichiro Ito, Tomas J. Philipson, Robert Rosner

For faculty biographies, visit [harris.uchicago.edu/faculty](http://harris.uchicago.edu/faculty)

### Affiliated Researchers

Michael Belsky, Kennette Benedict, R. Stephen Berry, Rena Conti, Edward Kolb, Sabina Shaikh, George S. Tolley

### University Centers and Programs

Faculty and student research at Chicago Harris is guided not only by theoretical interests, but also by a strong commitment to solving enduring public policy problems and applying skills learned in the classroom. Chicago Harris students and faculty collaborate with affiliated centers and programs across campus that specifically focus on energy, environmental, and science policy, including:

- Center for Environmental Science
- Center for Policy Practice
- Center for Robust Decision Making on Climate and Energy Policy
- Climate Systems Center
- Energy Policy Institute at Chicago
- Harris Energy Association
- The Paulson Institute
- Program on the Global Environment
- Urban Policy Initiative
- U.S. Environmental Protection Agency
- U.S. Government Accountability Office
- West Monroe Partners
- Worldwatch Institute

\* This list represents a general guide to typical coursework. These are examples of course offerings that may vary by year and semester, and are not intended to represent the entire curriculum of a specific year.

# Global Security



## Organizations That Hire Chicago Harris

Recruiters from organizations in global security continuously find smart, committed candidates for coveted internships and full-time positions. Recent employer partners include:

- Booz Allen Hamilton
- Brookings Institution
- Central Intelligence Agency
- Council on Foreign Relations
- Heartland Alliance
- Institute for Defense Analyses
- Institute for Justice
- LMI Government Consulting
- United Nations
- U.S. Government Accountability Office
- U.S. Department of Homeland Security
- U.S. Office of Personnel Management
- World Policy Institute

## Student Organizations

Student life at Chicago Harris includes a wide variety of extracurricular activities—from academic workshops and discussions to community development and group outings. Chicago Harris and UChicago student organizations that specifically focus on global security include:

- Committee on International Affairs and Public Policy (CIAPP)
- International Security and Veterans Initiatives Group

## Typical Coursework<sup>†</sup>

Security, Conflict, and Conflict Resolution; Advanced Topics in International Security; Domestic Politics and War; Islam and the West; Security and Geopolitics of Pakistan; State Building and Failure in the Developing World; U.S. National Security Policy

## Chicago Harris MPP Core Courses

Analytical Politics I: Strategic Foundations; Analytical Politics II: The Policymaking Process (Domestic and International options); Principles of Microeconomics and Public Policy I and II; Statistical Methods for Public Policy I and II; Decisions and Organizations; Mathematical Statistics and Public Policy I and II (alternate core courses)

## Example Mini Courses (not for credit)

The Evolution and Resiliency of the Global Jihadist Phenomenon; Current Topics in the Middle East

## Global Security Policy Faculty and Affiliated Researchers<sup>\*\*</sup>

### Faculty

Ethan Bueno de Mesquita, Roger Myerson  
For faculty biographies, visit [harris.uchicago.edu/faculty](http://harris.uchicago.edu/faculty)

### Adjunct and Affiliated Researchers

Azeem Ibrahim, Michael J. Reese, Frank Scheil, Qiang Zhou; Jake Braun

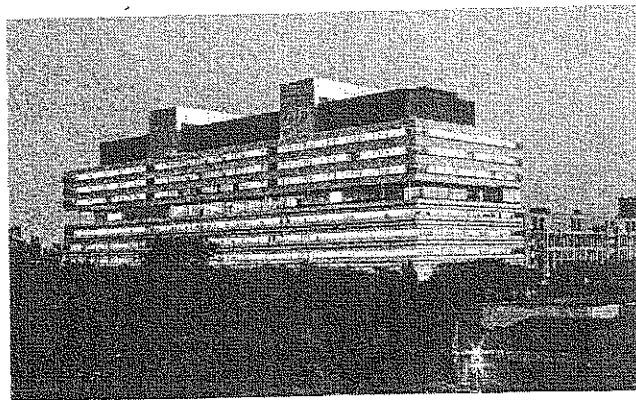
## University Centers and Programs

Faculty and student research at Chicago Harris is guided not only by theoretical interests, but also by a strong commitment to solving enduring public policy problems and applying skills learned in the classroom. Chicago Harris students and faculty collaborate with affiliated centers and programs across campus that specifically focus on global security policy, including:

- Center for Policy Practice
- Crime Lab
- Program on International Politics, Economics, and Security

<sup>†</sup> This list of courses are offered as a guide only and is not exhaustive. These are the typical courses offered (either as a core or as a summer part of the University) and are not a guarantee of future course offerings. Faculty as of September 2015.

# Health Policy



## Organizations That Hire Chicago Harris

Recruiters from organizations in health policy continuously find smart, committed candidates for coveted internships and full-time positions. Recent employer partners include:

- Access Community Health Network
- American Hospital Association
- American Institutes for Research
- American Medical Association
- Bain & Company
- Baysier Consulting
- Blue Cross Blue Shield
- Booz Allen Hamilton
- Centers for Disease Control and Prevention
- Chicago Community Trust
- Children's Aid and Family Services
- Consortium to Lower Obesity in Chicago Children
- Cook County Department of Public Health
- Heartland Alliance
- Huron Consulting Group
- Illinois Department of Human Services
- Kaiser Family Foundation
- The Leapfrog Group
- LMI Government Consulting
- Mathematica
- McKinsey & Company
- Millennium Challenge Corporation
- Navigant Consulting
- Partners in Health
- The Pew Charitable Trusts
- Planned Parenthood
- University of Chicago Medical Center
- U.S. Department of Health and Human Services
- U.S. Government Accountability Office
- U.S. Office of Personnel Management
- West Monroe Partners

## Student Organizations

Student life at Chicago Harris includes a wide variety of extracurricular activities—from academic workshops and discussions to community development and group outings. Chicago Harris and UChicago student organizations that specifically focus on health policy issues include:

- Community Health Initiative
- Diabetes Prevention and Management Group
- Food Policy Advocacy Group
- GlobeMed
- Health Leads
- Innovators in Social Policy
- On a Mission for Nutrition
- Strive Health Mentoring

## Typical Coursework

### Health Policy

Advanced Health Economics; Advanced Methods in Comparative Effectiveness Research; Aging and Health Policy; Applied Medical Cost-Effectiveness Analysis; Biomedical Technology: Innovation, Investment, and Management; Comparative Healthcare Systems and Pharmaceutical Policies: Lessons and Opportunities for Reform; Economics and Public Health in the Developing World; From Health Policy to Clinical Practice; Health Economics and Public Policy: Health Law and Policy; Principles of Epidemiology; Special Problems in Health Care Management

### Chicago Harris MPP Core Courses

Analytical Politics I: Strategic Foundations; Analytical Politics II: The Policymaking Process (Domestic and International options); Principles of Microeconomics and Public Policy I and II; Statistical Methods for Public Policy I and II; Decisions and Organizations; Mathematical Statistics and Public Policy I and II (alternate core courses)

## Health Policy Faculty and Affiliated Researchers\*\*

### Faculty

Daniel Bennett, Michael Greenstone, Jens Ludwig, Jeffrey Grogger, David O. Meitzer, Bruce Meyer, Alicia Menendez, Tomas J. Philipson  
For faculty biographies, visit [harris.uchicago.edu/faculty](http://harris.uchicago.edu/faculty)

### Affiliated Researchers

Elmer Abbo, Joseph Antoun, Jack Bierig, Kathleen A. Cagney, Rena Conti, Rupa Datta, Michael Davern, Joe Harris, R. Tamara Konetzka, Harold A. Pollack, Matthew Stagner

## University Centers and Programs

### Graduate Program in Health Administration and Policy (GPHAP)

Chicago Harris participates in GPHAP, which draws students and faculty from the graduate schools of business, social service administration, and medicine, as well as public policy. The GPHAP is an accredited course of study that trains students for leadership as managers, planners, consultants, and regulators in public and private health services.

Faculty and student research at Chicago Harris is guided not only by theoretical interests, but also by a strong commitment to solving enduring public policy problems and applying skills learned in the classroom. Chicago Harris students and faculty collaborate with affiliated centers and programs across campus that focus specifically on health policy across campus, including:

- Bucksbaum Institute for Clinical Excellence
- Center for Health Administration Studies
- Center for Health and the Social Sciences
- Center for Human Potential and Public Policy
- Chicago Center of Excellence in Health Promotion Economics
- Global Health Initiative
- Urban Health Initiative

\*\*Faculty and affiliated researchers' names are listed by their primary affiliation. Faculty are listed by their primary affiliation, and affiliated researchers are listed by their primary affiliation. Last updated in November 2019.



# International Policy



## Organizations That Hire Chicago Harris

Recruiters from organizations in international policy continuously find smart, committed candidates for coveted internships and full-time positions. Recent employer partners include:

- American Institutes for Research
- Asian American Institute
- Atlantic Council
- Booz Ailen Hamilton
- Bridgespan Group
- CACI International Inc
- Carnegie Middle Eastern Center
- City of Chicago, Mayor's Office of International Relations
- Chemonics International Consulting
- Department of Commerce, International Trade Administration
- Fontheim International
- Heshima Kenya
- Innovations for Poverty Action
- Inter-American Development Bank
- International Monetary Fund
- Jordan Investment Board
- The International Center for Trade and Sustainable Development
- International Monetary Fund
- McKinsey & Co.
- Millennium Challenge Corporation
- Ministry of Industry and Trade, Jordan
- Omix International
- The Organisation for Economic Cooperation and Development (OECD)
- Partners in Health
- Pratham
- Sustain US
- United Nations Foundation
- USAID
- U.S. Government Accountability Office
- U.S. Office of Personnel Management
- World Bank
- World Policy Institute
- World Trade Organization

## Student Organizations

Student life at Chicago Harris includes a wide variety of extracurricular activities—from academic workshops and discussions to community development and group outings. Several Chicago Harris and UChicago student organizations that focus specifically on international policy issues include:

- Amnesty International
- The Committee on International Affairs and Public Policy
- Habitat for Humanity
- International Leadership Council
- International Social Welfare
- International Students Association
- Asian Policy Forum
- Latin America(n) Matters
- Mexicans en UChicago
- Model UN
- Partnership for the Advancement of Refugee Rights
- Students for Justice in Palestine

## Typical Coursework\*

### Development

Economic Development; Economics and Public Health in the Developing World; International Policy Practicum: Nuclear Policy; Poverty and Economic Development; South Asia: Triumphs and Travails; Topics in Latin American Economies

### Security, Conflict, and Conflict Resolution

Advanced Topics in International Security; Domestic Politics and War; Islam and the West; Security and Geopolitics of Pakistan; The Evolution and Resiliency of the Global Jihadist Phenomenon; State Building and Failure in the Developing World; U.S. National Security Policy

### Trade Policy

Competition Policy: Theory and Practice; International Trade Theory and Policy

## Chicago Harris MPP Core Courses

Analytical Politics I: Strategic Foundations; Analytical Politics II: The Policymaking Process (Domestic and International options); Principles of Microeconomics and Public Policy I and II; Statistical Methods for Public Policy I and II; Decisions and Organizations; Mathematical Statistics and Public Policy I and II (alternate core courses)

## International Policy Faculty and Affiliated Researchers\*\*

Daniel Bennett, Ethan Bueno de Mesquita, Ariel Kalil, Robert J. LaLonde, Ioana Marinescu, Susan Mayer, Alicia Menendez, Roger Myerson, Konstantin Sonin

For faculty biographies, visit [harris.uchicago.edu/faculty](http://harris.uchicago.edu/faculty)

## Affiliated Faculty/Researchers

Kennette Benedict, Sean Durkin, Joe Harris, Azeem Ibrahim, Michael Reese, Frank Schell, Qiang Zhou

## University Centers and Programs

Faculty and student research at the Chicago Harris is guided not only by theoretical interests, but also by a strong commitment to solving enduring public policy problems and applying skills learned in the classroom. Chicago Harris students and faculty collaborate with affiliated centers and programs across campus that focus specifically on international policy issues, such as:

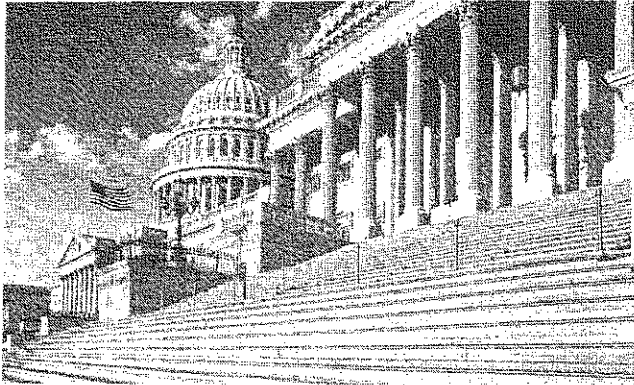
- Center for East Asian Studies
- Center for East European and Russian/Eurasian Studies
- Center for International Studies
- Center for Jewish Studies
- Center for Latin American Studies
- Center for Middle Eastern Studies
- Center for Policy Practice
- Center in Beijing
- Cultural Policy Center
- France-Chicago Center
- Initiative on Global Markets
- Katz Center for Mexican Studies
- Nicholson Center for British Studies
- The Paulson Institute
- Program on International Politics, Economics, and Security
- Southern Asia at Chicago
- University of Chicago Center in Paris

## Cooperative Programs

Students are provided opportunities to take courses at Chicago Harris and other institutions around the world.

- Tel Aviv University
- University of Chile
- Yonsei University Graduate School of International Studies

# Politics and the Policymaking Process



## Organizations That Hire Chicago Harris

Recruiters from organizations in politics and policymaking continuously find smart, committed candidates for coveted internships and full-time positions. Recent employer partners include:

- American Institutes for Research
- Bain & Company
- Better Government Association
- Booz Allen Hamilton
- City of Chicago
- City of San Francisco, Office of the Mayor
- Civic Consulting Alliance
- Congressional Budget Office
- Congressional Research Service
- Cook County Assessor's Office
- Deloitte, Public Sector Consulting
- District of Columbia, Office of the Mayor
- Gallup
- ICLEI - Local Governments for Sustainability USA
- Legislative Analyst's Office of California
- LMI Government Consulting
- Maryland Department of Budget and Management
- Mathematica Policy Research
- Metropolis Strategies
- Metropolitan Mayors Caucus
- Montana Legislature
- Navigant Consulting
- Obama for America
- The Pew Charitable Trusts
- Presidential Management Fellows Program
- State of Illinois
- U.S. Census Bureau
- U.S. Department of Agriculture
- U.S. Department of Energy
- U.S. Department of Health and Human Services
- U.S. Department of Homeland Security
- U.S. Department of Housing and Urban Development
- U.S. Department of State
- U.S. Department of the Treasury
- U.S. Government Accountability Office
- U.S. Office of Management and Budget
- U.S. Office of Personnel Management
- The White House

## Student Organizations

Student life at Chicago Harris includes a wide variety of extracurricular activities—from academic workshops and discussions to community development and group outings. Chicago Harris and UChicago student organizations that specifically focus on politics and the policymaking process include:

- Chicago Policy Review
- College Republicans
- Graduate Consulting Club
- Roosevelt Institute
- Student Government
- Students for a Democratic Society
- Students for a Free Society
- University of Chicago Democrats

## Typical Coursework<sup>1</sup>

### Federal, State, and Local Politics

Distributive Politics; Domestic Politics and War; Federalism and Decentralization; Political and Campaign Strategy; Political Feasibility Analysis: Winning Strategies in Public Policy; Politics and Policy in the States; Political Economies of Cities and Metropolitan Areas

### Management and Organizations

Labor Management Relations: Massive Change; Non-Profit Organizations; Organizations and Leadership; Organizations, Management, and Social Policy; Philanthropy and Public Policy; Theory of Organizations; Labor Management Relations

### Policymaking Process

Financing State and Local Government; Formal Models in Politics of Policymaking; Leadership in Chicago; Political Institutions and the Policy Process; Urban/Mayoral Leadership: The Politics of Shaping Urban Policy; Leadership and Modern American Politics

### Chicago Harris MPP Core Courses

Analytical Politics I: Strategic Foundations; Analytical Politics II: The Policymaking Process (Domestic and International options); Principles of Microeconomics and Public Policy I and II; Statistical Methods for Public Policy I and II; Decisions and Organizations; Mathematical Statistics and Public Policy I and II (alternate core courses)

### Example Mini-Courses (not for credit)

Best Practices in Non-Profit Public Policy Advocacy; Policy Memo-Writing

## Politics and the Policymaking Process Faculty and Affiliated Researchers<sup>2</sup>

### Faculty

Scott Ashworth, Christopher R. Berry, Peter Buisseret, Anthony Fowler, J. Mark Hansen, Ethan Bueno de Mesquita, William G. Howell, Roger Myerson, Paula Worthington

For faculty biographies, visit [harris.uchicago.edu/faculty](http://harris.uchicago.edu/faculty)

### Affiliated Researchers

Jack Bierig, Terri Brady, Evelyn Brodtkin, Richard M. Daley, Shelley Davis, Ron Gibbs, Adam Hitchcock, Ginger Ostro, John Paul Rollert

### University Centers and Programs

Faculty and student research at Chicago Harris is guided not only by theoretical interests, but also by a strong commitment to solving enduring public policy problems and applying skills learned in the classroom. Chicago Harris students and faculty collaborate with affiliated centers and programs across campus that focus on politics and the policymaking process, including:

- Center for Policy Practice
- Center for Social Program Evaluation
- Institute of Politics
- Program on International Politics, Economics, and Security
- Program on Political Institutions
- Stigler Center for the Study of the Economy and the State
- Urban Policy Initiative

<sup>1</sup> For a full list of the official program courses, visit [harris.uchicago.edu](http://harris.uchicago.edu). <sup>2</sup> For a full list of faculty and affiliated researchers, visit [harris.uchicago.edu/faculty](http://harris.uchicago.edu/faculty).

# Program Evaluation and Methods of Policy Analysis



## Organizations That Hire Chicago Harris

Recruiters from organizations in policy analysis continuously find smart, committed candidates for coveted internships and full-time positions. Recent employer partners include:

- American Institutes for Research
- American Jewish Committee
- Breakthrough Institute
- Brookings Institution
- Cato Institute
- Chapin Hall
- Congressional Research Service
- Gallup
- ICLEI – Local Governments for Sustainability USA
- Institutes for Research
- Mathematica Policy Research
- Metropolitan Strategies
- Metropolitan Planning Council
- Millennium Challenge Corporation
- NORC at the University of Chicago
- Northwestern University
- Partners in Health
- Power Switch NFP
- Princeton University
- Richard Day Research
- Social Impact Research Center
- Strategic Data Project, Harvard University
- Urban Education Institute

## Student Organizations

Student life at the Chicago Harris includes a wide variety of extracurricular activities—from academic workshops and discussions to community development and group outings. Chicago Harris and UChicago student organizations that specifically focus on policy analysis include:

- Chicago Policy Review
- Community and Economic Development Organization
- Graduate Consulting Club

## Typical Coursework\*

### Economic Theory

Advanced Microeconomics; Competition Policy: Theory and Practice; Intermediate Microeconomics; Macroeconomics for Public Policy; Matching, Efficiency, and Inequality; Principles of Microeconomics and Public Policy I and II

### Political Theory

Advanced Topics in International Political Economy; Distributive Politics; Formal Models in the Politics of Policymaking; Party, Ideology, and Policy in the United States; Political and Campaign Strategy; Political Economy for Public Policy; Political Feasibility Analysis; Winning Strategies in Public Policy; Theories of Justice and the Common Good

### Program Evaluation

Applied Medical Cost Effective Analysis; Cost-Benefit Analysis; Cost Effectiveness Analysis; Program Evaluation

## Statistics

Advanced Methods in Comparative Effectiveness Research; Analysis of Microeconomic Data I, II, and III; Applied Econometrics I and II; Health Status Assessment; Measurement and Inference; Mathematical Statistics for Public Policy I and II; Mixed Methods Approaches to Policy Research; The National Longitudinal Survey of Youth: A Social Policy Research Tool; Policy Analysis: Methods and Applications; Principles of Epidemiology; Statistical Methods for Public Policy I and II; Survey Questionnaire Design; Survey Research Methodology

## Chicago Harris MPP Core Courses

Analytical Politics I: Strategic Foundations; Analytical Politics II: The Policymaking Process (Domestic and International options); Principles of Microeconomics and Public Policy I and II; Statistical Methods for Public Policy I and II, Decisions and Organizations; Mathematical Statistics and Public Policy I and II (alternate core courses)

## Example Mini-Course (not for credit)

Policy Memo Writing

## Program Evaluation and Methods of Policy Analysis Faculty and Affiliated Researchers<sup>†</sup>

### Faculty

Christopher R. Berry, Dan A. Black, Kerwin Charles, Amy Claessens, Don L. Coursey, Wioletta Dziuda, Jeffrey Grogger, James J. Heckman, William G. Howell, Damon Jones, Ariel Kalli, Benjamin Keys, Robert J. LaLonde, Jens Ludwig, Ofer Malamud, Willard G. Manning, Ioana Marinescu, David O. Meltzer, Alicia Menendez, Bruce D. Meyer, Roger Myerson, Colm A. O'Muircheartaigh, Tomas J. Philipson, Raaj Sah, Konstantin Sonin, Paula Worthington

For faculty biographies, visit [harris.uchicago.edu/faculty](http://harris.uchicago.edu/faculty)

### Affiliated Researchers

Rene Bautista, Terri Brady, Kathleen A. Cagney, Rupa Datta, Michael Davern, Sean Durkin, Robert George, Ron Gibbs, Lisa Lee, Ginger Ostro, Harold A. Pollack, Todd Schuble, Daniel Sullivan

## University Centers and Programs

Faculty and student research at Chicago Harris is guided not only by theoretical interests, but also by a strong commitment to solving enduring public policy problems and applying skills learned in the classroom. Chicago Harris students and faculty collaborate with affiliated centers and programs across campus that focus on policy analysis, including:

- Center for Policy Practice
- Center for Social Program Evaluation
- Center for the Study of Politics and Society
- Center for the Study of Race, Politics, and Culture
- NORC
- Population Research Center
- Urban Policy Initiative

\*Not all courses are offered each semester or each year. These are examples of courses offered in the past or to be offered in the future. For a complete list of courses, visit [harris.uchicago.edu](http://harris.uchicago.edu)

# Social Policy and Inequality



## Organizations That Hire Chicago Harris

Recruiters from organizations in social policy and inequality continuously find smart, committed candidates for coveted internships and full-time positions. Recent employer partners include:

- The Bridgespan Group
- CARE
- Children's Aid and Family Services
- Illinois Department of Human Services
- Illinois Partners for Human Service
- Innovations for Poverty Action
- NORC at the University of Chicago
- Ounce of Prevention Fund
- Social Impact Research Center
- Stand for Children
- Urban Institute

## Student Organizations

Student life at the Chicago Harris includes a wide variety of extracurricular activities—from academic workshops and discussions to community development and group outings. Chicago Harris and UChicago student organizations that specifically focus on social policy and inequality issues include:

- Chicago Justice Initiative
- Community and Economic Development Organization
- Minorities in Public Policy Studies
- Out in Public Policy
- Women in Public Policy

## Typical Coursework\*

### Poverty and Inequality

Crime Policy; Economic Demography and Public Policy; Matching, Inefficiency, and Inequality; Poverty and Economic Development; Poverty, Inequality, and Government Policy; Poverty, Inequality, and the Welfare State; Race, Wealth, and Public Policy; Welfare Policy: The Youth Gang Problem; Poverty and Social Welfare Policy

### Chicago Harris MPP Core Courses

Analytical Politics I, Strategic Foundations; Analytical Politics II: The Policymaking Process (Domestic and International options), Principles of Microeconomics and Public Policy I and II; Statistical Methods for Public Policy I and II; Decisions and Organizations; Mathematical Statistics and Public Policy I and II (alternate core courses)

## Social Policy and Inequality Faculty and Affiliated Researchers\*\*

### Faculty

Daniel Bennett, Dan A. Black, Kerwin Charles, Amy Claessens, Jeffrey Grogger, James J. Heckman, William G. Howell, Ariel Kallil, Robert J. LaLonde, Jens Ludwig, Ofer Malamud, Ioana Marinescu, Susan E. Mayer, David O. Meltzer, Alicia Menendez, Bruce D. Meyer, Roger Myerson, Tomas J. Philipson  
For faculty biographies, visit [harris.uchicago.edu/faculty](http://harris.uchicago.edu/faculty)

### Affiliated Researchers

Evelyn Brodtkin, Kathleen A. Cagney, Rupa Datta, Shelley Davis, Joe Harris, Candice Kane, R. Tamara Konetzka, Terry Mazany, Harold A. Pollack, Matthew Stagner

## University Centers and Programs

Faculty and student research at the Chicago Harris is guided not only by theoretical interests, but also by a strong commitment to solving enduring public policy problems and applying skills learned in the classroom. Chicago Harris students and faculty collaborate with affiliated centers and programs across campus that specifically focus on social policy and inequality issues, including:

- Center for Human Potential and Public Policy
- Center for Policy Practice
- Center for the Study of Race, Politics, and Culture
- NORC
- Ogburn-Stouffer Center for the Study of Social Organizations
- Population Research Center
- Urban Policy Initiative

\* This list is not intended to be exhaustive. It is provided as a general guide only. \*\* This list is not intended to be exhaustive. It is provided as a general guide only.



# CHICAGO HARRIS

PUBLIC POLICY | THE UNIVERSITY OF CHICAGO

**The University of Chicago Harris  
School of Public Policy**  
1155 East 60th Street  
Chicago, IL 60637  
773.702.8400  
harrisschool@uchicago.edu

**Admissions Office**  
773.702.8401  
harrisadmissions@uchicago.edu

**Career Development Office**  
773.834.9082  
career-development@uchicago.edu

**Office of Student Affairs**  
773.834.2196  
douglasgeiger@uchicago.edu

[harris.uchicago.edu](http://harris.uchicago.edu)